

SP Series

SELF - PRIME PUMPS

Sealless Mag Drive



Threaded

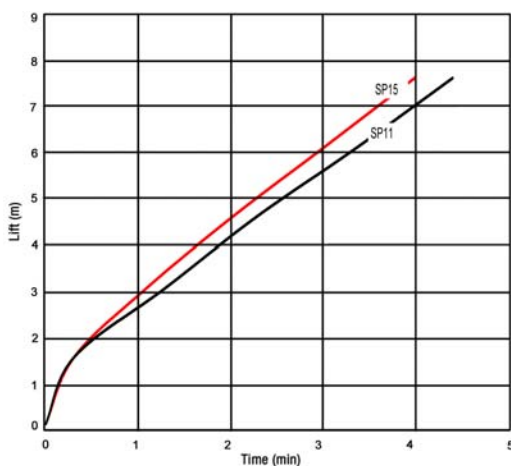


Flange



Union

Priming Time



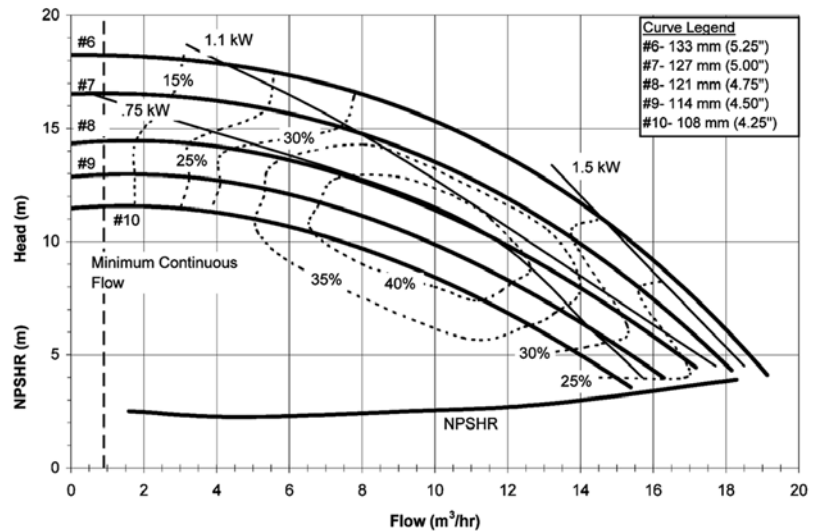
Features

- 15 ft. (4.5 m) lift in 2 minutes
- 25 ft. (7.6 m) lift maximum
- Locates above the liquid source
- Up to 1.8 specific gravity
- Temperature to 220°F (104°C)
- Excellent corrosion resistance - PP or PVDF

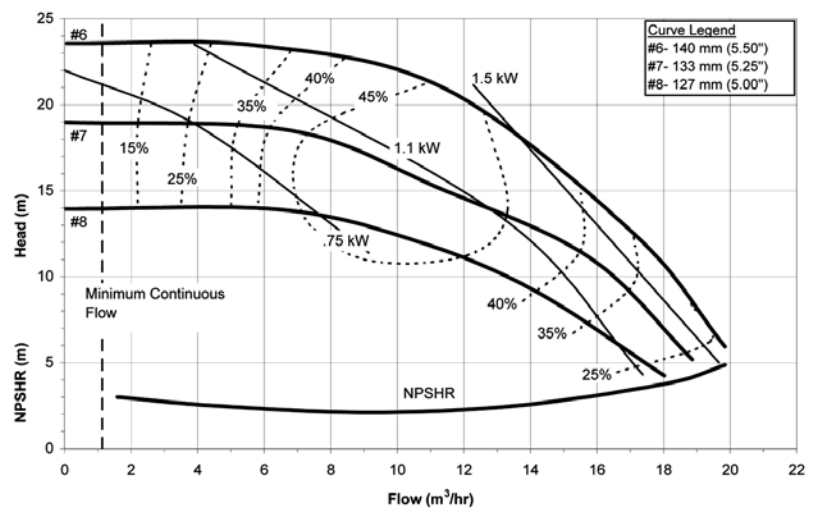
Performance - 2900 rpm, 5 ft. lift

1-1/2" Suction, 1-1/2" Discharge

SP11



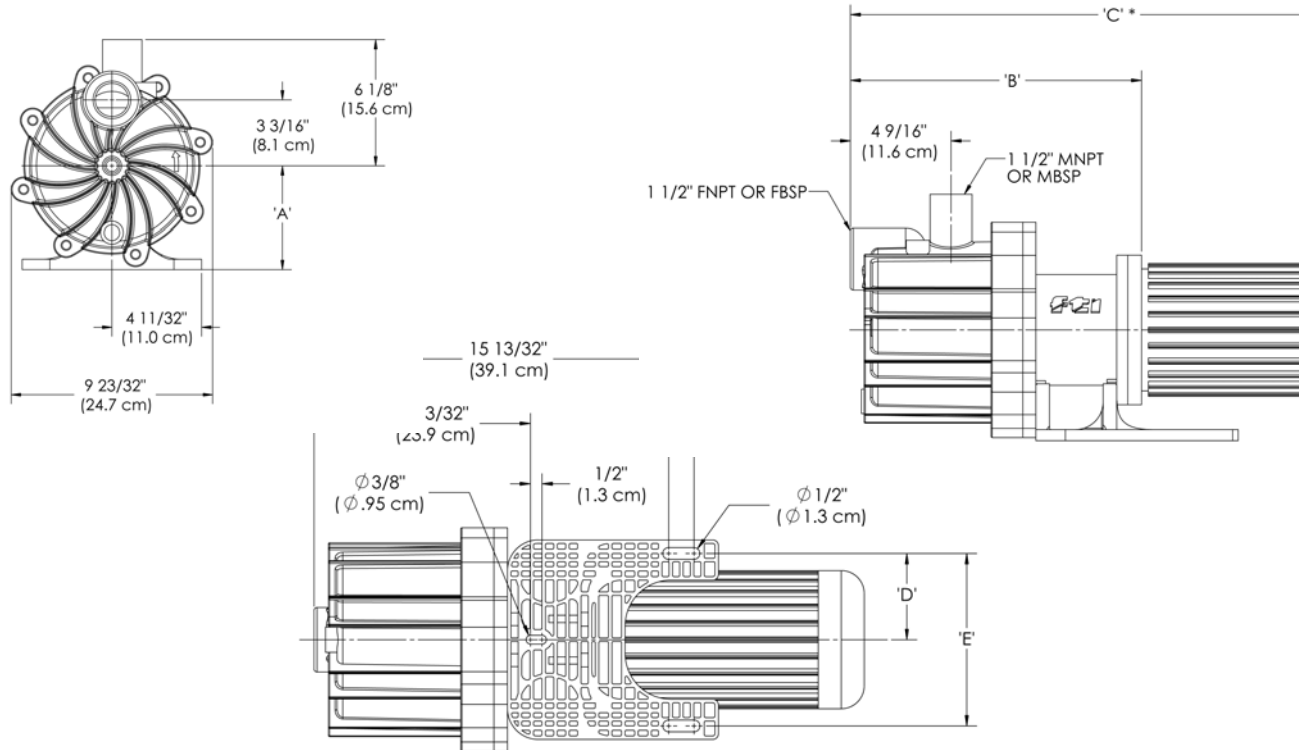
SP15



Operation

- A small amount of liquid is poured through the fill port to initially prime the chamber.
- The pump is started. Recirculating liquid creates a vacuum in the suction line, drawing air from the suction line and releasing it through the discharge outlet.
- When the liquid in the suction line reaches the pump inlet, the pump is “primed,” and normal operation begins.

Dimensions



Also available 1-1/2" x 1-1/2" ANSI-ISO PN20/PN40 flange or 50 mm x 50 mm union connection.

MOTOR FRAME	DIM 'A'	DIM 'B' *	DIM 'C'	DIM 'D'	'DIM 'E'
NEMA 56C FR.	5" (12.7 cm)	12-9/16" (31.9 cm)	24-9/16" (62.4 cm)	3-3/4" (9.5 cm)	7-1/2" (19.1 cm)
NEMA 145 FR.	5" (12.7 cm)	12-9/16" (31.9 cm)	23-5/16" (59.2 cm)	3-3/4" (9.5 cm)	7-1/2" (19.1 cm)
NEMA 184 FR.	5" (12.7 cm)	13-7/16" (31.4 cm)	25-11/16" (66.6 cm)	3-3/4" (9.5 cm)	7-1/2" (19.1 cm)
IEC 80 FR. W/B14 or B5**	5" (12.7 cm)	13-3/16" (33.5 cm)	23-23/32" (60.2 cm)	3-3/4" (9.5 cm)	7-1/2" (19.1 cm)
IEC 90 FR. W/B14 or B5**	5" (12.7 cm)	13-3/16" (33.5 cm)	23-7/8" (60.6 cm)	3-3/4" (9.5 cm)	7-1/2" (19.1 cm)
IEC 100 FR. B14	5" (12.7 cm)	13-1/4" (33.7 cm)	25-13/32" (64.5 cm)	3-5/32" (8.0 cm)	6-10/32" (16.0 cm)
IEC 112 FR. B14	5" (12.7 cm)	13-1/4" (33.7 cm)	25-29/32" (65.8 cm)	3-3/4" (9.5 cm)	7-1/2" (19.1 cm)
IEC 100 FR. B5	3-15/16" (10.0 cm)	13-1/4" (33.7 cm)	25-25/32" (65.5 cm)	3-5/32" (8.0 cm)	6-10/32" (16.0 cm)
IEC 112 FR. B5	4-13/32" (11.2 cm)	13-1/4" (33.7 cm)	26-5/8" (67.6 cm)	3-3/4" (9.5 cm)	7-1/2" (19.1 cm)

*Varies with motor manufacturer

Note: Contact factory for dimensions on flanged or union models.



FINISH THOMPSON INC.

921 Greengarden Road • Erie, PA 16501-1591 U.S.A.
Ph 814-455-4478 • Fax 814-455-8518
Email fti@finishthompson.com • www.finishthompson.com



AN ISO 9001
COMPANY

Literature I.D. No. -FT06-934